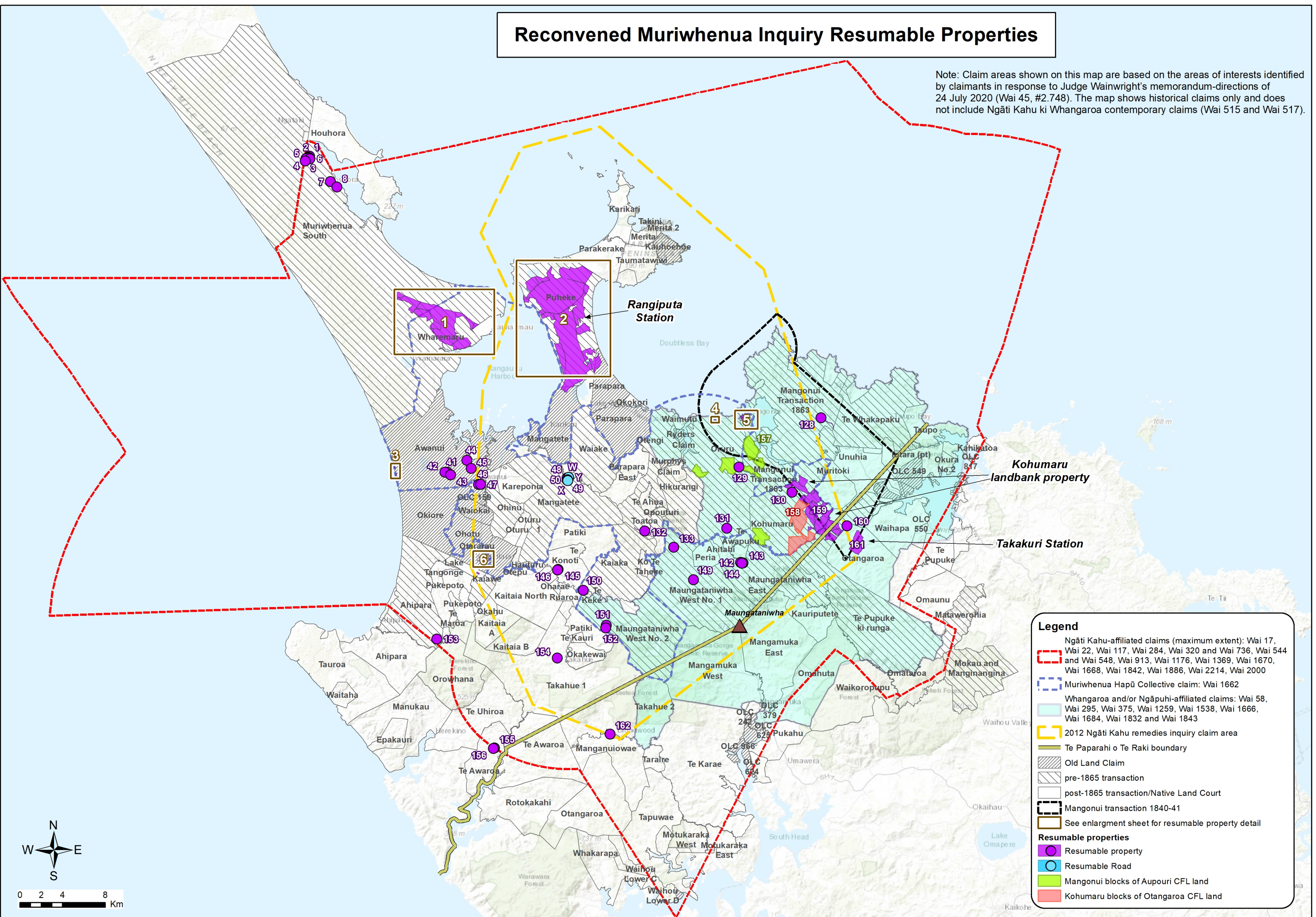


Reconvened Muriwhenua Inquiry Resumable Properties

Note: Claim areas shown on this map are based on the areas of interests identified by claimants in response to Judge Wainwright's memorandum-directions of 24 July 2020 (Wai 45, #2.748). The map shows historical claims only and does not include Ngāti Kahu ki Whangaroa contemporary claims (Wai 515 and Wai 517).



Legend

- Ngāti Kahu-affiliated claims (maximum extent): Wai 17, Wai 22, Wai 117, Wai 284, Wai 320 and Wai 736, Wai 544 and Wai 548, Wai 913, Wai 1176, Wai 1369, Wai 1670, Wai 1668, Wai 1842, Wai 1886, Wai 2214, Wai 2000
- Muriwhenua Hapū Collective claim: Wai 1662
- Whangaroa and/or Ngāpuhi-affiliated claims: Wai 58, Wai 295, Wai 375, Wai 1259, Wai 1538, Wai 1666, Wai 1684, Wai 1832 and Wai 1843
- 2012 Ngāti Kahu remedies inquiry claim area
- Te Paparahi o Te Raki boundary
- Old Land Claim
- pre-1865 transaction
- post-1865 transaction/Native Land Court
- Mangonui transaction 1840-41
- See enlargement sheet for resumable property detail

Resumable properties

- Resumable property
- Resumable Road
- Mangonui blocks of Aupouri CFL land
- Kohumaru blocks of Otangaroa CFL land

