

[Subscribe](#)[Past Issues](#)[Translate ▼](#)[View this email in your browser](#)

TE KAHU O TAONUI
Me mahi tahi tātou

ISSUE #121 | 4 October 2021



TE KAHU O TAONUI E-PĀNUI

The purpose of this digest is to disseminate information to the iwi collective, which can be further circulated to your iwi members, whānau and communities. The information is a collation of different news items and important intel received through several channels today in a compact bulletin.

Our goal is to feature as many Taitokerau specific kaupapa and news that will be valued by our readers. In addition, we have suggested some further actions that the collective might regard as important issues to follow up.

IN THIS ISSUE - CLICK TO JUMP

COVID-19 UPDATE:

NATIONAL AND WAIKATO UPDATE

[ALERT LEVEL CHANGE PHASES](#)

[MINISTER HENARE HAVING BRAVE CONVERSATIONS AROUND VACCINE](#)

HAUORA:[NGĀ HINEPŪKŌRERO MĀORI POETS TAUTOKO BREAST CANCER AWARENESS](#)[KA PAI TE TAI TOKERAU VACCINATION DRIVE GIVEAWAY](#)[DR SIOUXSIE WILES AND LADI6 ANSWER COVID-19 VACCINE Q'S](#)**HAUKAINGA:**[NGĀTI WAI EXTEND AWHI TO THEIR URI IN KIRIKIROA](#)[TE RARAWA HAPŪ OCCUPY SITE OF FELLED RAKAU TĀONGA](#)[TAITOKERAU BUSINESSES FEEL STING OF AUCKLAND BORDER](#)**KI TE AO:**[WHAKATŌHEA MUSSEL FARM LANDS LUCRATIVE OVERSEAS EXPORT](#)[OPPORTUNITY](#)[NGAI TAHU CALL FOR RETHINK IN AOTEAROA NAME DEBATE](#)[RUA BIOSCIENCE GET THE ALLCLEAR TO MANUFACTURE CBD PRODUCTS](#)**ALL OF GOVERNMENT:**[2 MILLION NZ'ERS VACCINATED](#)[FULL VACCINATION REQUIRED FOR INTL TRAVEL FROM 1 NOV](#)**COVID-19 UPDATE**

There are 29 new community cases of COVID-19 to report today, 28 of these are in Auckland, and 1 is in Waikato. This takes our total number of cases associated with the current outbreak to 1,357. Of these, 1,082 cases have recovered, taking our total active community cases to 274. Of these new cases, 21 are epidemiologically linked and 8 are yet to be linked. Of yesterday's 33 cases, 19 people were potentially infectious in the community. The rest were in isolation during this time. There are now 30 cases in hospital, 29 in the Auckland area and 1 in the Waikato area. Of these, 5 are in an intensive care or high dependency unit. There are 2 new active cases at the border. The total number of active cases in New Zealand is 287 - this includes 274 cases in the community and 13 border cases.

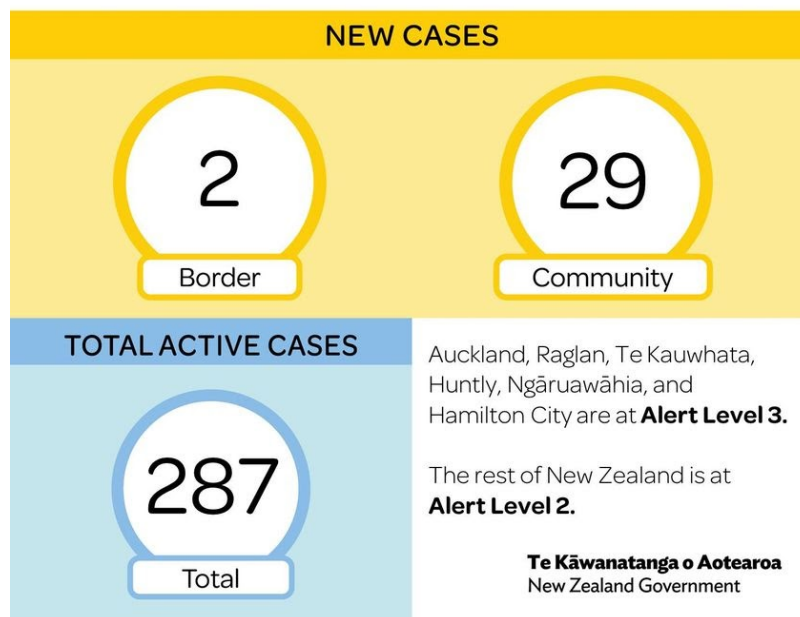
TESTING

Testing in Waikato is available at a range of dedicated sites, including Claudelands Event Centre (8am - 8pm), Raglan Rugby Grounds (10am - 4.30pm), as well as GPs and designated GP practices (which do not require you to be enrolled as patient).

COVID-19 Case Update

Monday, 4 October 2021

Unite
against
COVID-19



“Today, based on public health advice, Cabinet confirmed its plan to transition Auckland out of current restrictions carefully and methodically, with regular check-ins to ensure we’re continuing to actively control the virus,” Jacinda Ardern said.

AUCKLAND

Step 1

From 11:59pm Tuesday, Auckland will remain in Alert Level 3 but several key changes will occur. People will be able to connect with loved ones OUTDOORS with no more than two households at a time, up to a maximum of 10 people; early childhood education will return for all; and people can move around Auckland for recreation such as beach visits and hunting.

Step 2

At step two retail will open their doors, with the usual measures of wearing facemasks and keeping up physical distancing; public facilities such as pools and zoos will open; and the number of people who can meet OUTDOORS will increase to 25.

Step 3

Step three will bring back those higher risk settings. Hospitality will open – seated, separated and with a limit of 50; close contact businesses like

[Subscribe](#)[Past Issues](#)[Translate ▼](#)

gatherings will also then extend to 50.

Cabinet will review each step weekly to ensure it's safe to move before confirming the next step. The wage subsidy will continue to be available.

Rest of New Zealand

Waikato will remain in their bespoke Level 3. Rest of the country will remain at Alert Level 2 and the cap on hospitality numbers will be removed as long as distancing and seating restrictions remain in place.

[More to read here](#)



Whānau Ora Minister Peeni Henare says the state of the Covid-19 vaccine rollout means we are "on the precipice of a future or a significant failure." Henare (Ngāti Hine, Ngāpuhi) met with iwi health providers from across Te Tai Tokerau in Whangārei to talk mate korona, and lagging Māori vaccination rates. Less than 50 per cent of eligible Māori have received their first vaccination in Northland - among the worst rates in the country. The minister acknowledged the heavy workload for iwi providers, assuring them he had their backs. He said he was having "uncomfortable conversations ... to confront our DHBs to say 'you said you would do this and I'm here to make sure it's happened'." [More here](#)

[Subscribe](#)[Past Issues](#)[Translate ▼](#)

TE KAHU O TAONUI
Me mahi tahi tātou



Protecting whānau is what we do
KARAWHIUA

Visit tkot.org.nz

Visit karawhiua.nz



HAUORA



Māori poetry collective, Ngā Hinepūkōrero, are excited to lend their skills in the name of Breast Cancer awareness. The poem, called Ahi Kā, draws on the Māori worldview (te ao Māori) of body positivity to encourage women to get a mammogram. Breast Cancer Foundation NZ recommends considering annual mammograms from 40-49, then every two years from 50. Free mammograms through BreastScreen Aotearoa are available for women aged 45-69 and can be booked by calling 0800 270 200. October is Breast Cancer Awareness Month and there are loads of different ways to get involved - from being breast-aware (checking your breasts or getting a

education and parent support.

Pink Ribbon Street Appeal – Volunteer for, or donate to, NZ’s pinkest street appeal on 29 and 30 October. [Read more here.](#)

Make a donation online to Pink Ribbon Street Appeal

ka pai
Te Tai Tokerau

500 Gifts up for GRABS

United against COVID-19

Every weekday from 1 October through to Christmas, we are giving away more than 500 gifts to all Northland residents who have been vaccinated against COVID-19 to say thank you. You are not only protecting yourself, your whānau, and your community, but also those who are unable to be vaccinated.

ka pai.

Making Christmas Unstoppable

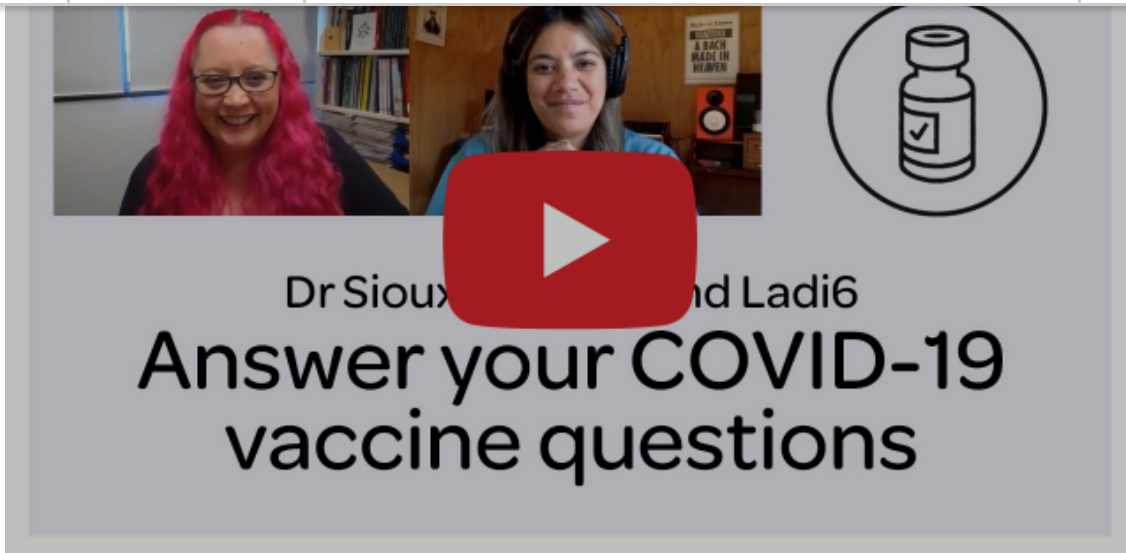
Where possible gifts sourced locally to support business recovery
T&C's Apply - Go to Northlanddnhb.org.nz for more information

TE POARI HAUORA Ā
ROHE O TĒTAI TOKERAU
Northland District Health Board

Subscribe

Past Issues

Translate ▼



This quick two-minute video with microbiologist Siouxsie Wiles and artist Ladi6 breaks down the COVID-19 vaccine's effectiveness.

Get your first dose before Labour Day (25 October) so you can have your second dose in December and be fully vaccinated by Christmas.

HAU KAINGA



Manaaki i te whānau ki Kirikiriroa

As much of the Waikato moved to alert level 3 overnight, we extend our aroha and manaaki to our Ngātiwai whānau and the wider communities of Kirikiriroa. We offer our manaaki and support to you all by way of our 0800 covid support number.

0800 119 725 - Ngātiwai Support Line

If you are having difficulties through this newly announced L3 lockdown in Waikato, please call our 0800 line and one of our staff will be available to

roughly, please call and let us know when details of your event are confirmed.
 There are many places you can go with no appointments needed. Visit Karawhiua website for vaccination sites near you.



In a bid to protect a 300-year-old Pōhutukawa tree from further damage, local hapū in Ahipara in the Far North have moved onto whenua at Moringai Māori Reserve. [Two weeks ago, the Pōhutukawa tree, which is located on Wharo Way in Ahipara was taken to with a chainsaw](#), the people responsible for the cutting of the tree claim they were simply pruning the tree. The tree is considered sacred by local hapū, and now they are calling for the return of the land where the tree stands. On Saturday, a group of around 30 local hapū members moved onto the land, spokesperson Rueben Taipari says those involved in the noho whenua are 100 percent committed to protecting the tree from further damage. To mark the occasion, local hapū planted 200 Pōhutukawa saplings on the whenua. The land where the tree stands has seen large-scale development in recent years and is the original site of a marae of Te Rarawa chief Toakai. Following the land being gifted to the Catholic Church, which was then onsold, the land was used by the church as well as the Māori Land Court. Only one parcel of land on Wharo Way remains in Māori hands. [More here](#)



Businesses in Te Tai Tokerau are feeling the strain as Auckland's border keeps visitors at bay. News that the city's checkpoints will remain throughout level 2 has been tough to take for many Northland tourism operators as they remain cut off for the foreseeable future. Edgewater Palms Ramada manager Nicki Kempthorne said the school holidays, which begin tomorrow, had been fully booked but cancellations had been trickling through every day. The business has had about eight stays in the past six weeks - ordinarily, that would be hundreds. [Article here](#)

KI TE AO



Not many people thought small-town Ōpōtiki could pull off New Zealand's

[Subscribe](#)[Past Issues](#)[Translate ▼](#)

Open Ocean Whakatōhea mussel operator has done it in just seven years and has secured a possible \$400-million-a year overseas opportunity. The company will start exporting its popular greenshell mussels (Whakatōhea kūtai), already sold in Pakn'Save and New World shops throughout the country, to the USA, from its new \$35 million state-of-the-art mussel processing factory in Ōpōtiki. It will produce 45-50 tonnes a day of kūtai (mussels) for national and international distribution. So far, there are close to 90 staff at the mussel company and by 2025 there will be almost 280 jobs available, ranging from production to managerial positions, with the help of a training scheme the company has to upskill and train whānau into different jobs throughout the company. [Read more here.](#)



A Ngāi Tahu leader has called for a rethink on a movement to change New Zealand's official name to Aotearoa, saying it risks overlooking the South Island.

A name change has been brought to the fore by the [Māori Party launching a petition](#) which called for restoring Māori names for the country, as well as for towns, cities and other places. At the core of his reservations is the history of the name Aotearoa, which many people did not realise originally referred solely to the North Island. He had been heartened to see Aotearoa catch on in an informal sense over the years, but was reticent about a more formal arrangement. [Read more here.](#)



Rua Bioscience, New Zealand's first Māori founded NZX-listed company, has received Good Manufacturing Practice certification from Medsafe, allowing it to manufacture medicinal cannabis products. The first product Rua Bio will manufacture is a cannabinoid (CBD) oil. CBD oils are commonly prescribed in NZ for pain, epilepsy and anxiety. Rua Bioscience CEO, Rob Mitchell, says it is a significant milestone for the Tairāwhiti-based company. Manufacturing of the product will happen at the purpose-built facility in Gisborne and the compounded CBD oil will be available in New Zealand as a prescription only medicine. Since the implementation of the Medicinal Cannabis Scheme, Rua has focused on meeting the heightened global demand for medicinal cannabis products through the establishment of world class cultivation and manufacturing capabilities in Tairawhiti. [Read more here.](#)

ALL OF GOVERNMENT



More than 2 million people have now received two doses of the COVID-19 vaccine, marking a significant milestone for the largest vaccination programme in Aotearoa New Zealand's history, Minister for COVID-19 Response Chris Hipkins says. "This achievement is also testament to the great effort of New Zealand's health workers who've been working long and hard to deliver the largest vaccination programme in our history. With 5,346,591 doses administered so far, and 1,067,000 active bookings in the Book My Vaccine system, the response of New Zealanders means we're on track to our goal of having all eligible people vaccinated by the end of the year. "Make your appointments now - every dose counts." [Read more here.](#)



Full vaccination will become a requirement for non-New Zealand citizens

[Subscribe](#)[Past Issues](#)[Translate](#) ▼

status when registering with the Managed Isolation Allocation System, as well as presenting proof of vaccination or a relevant exemption to their airline and to Customs officers once they land. The COVID-19 Technical Advisory Group has recommended that a full course of any of the 22 COVID-19 vaccines approved by a government or approval authority, with the last dose being at least 14 days before arrival, will be acceptable at this stage. Guidance will be prepared on what will qualify as evidence of a vaccination or an exemption. Everybody arriving will still be required to complete 14 days in Managed Isolation and Quarantine, and all travellers except those from exempt locations will still need to have evidence of a negative COVID-19 test result from an accredited laboratory within 72 hours of their first scheduled international flight. [Announcement here](#)

HE TONO KI TE HUNGA PĀNUUI

How did you like this edition of our E-Pānui? Click on the kanohi below to let us know.



A MESSAGE TO OUR AWESOME SUBSCRIBERS

E te iwi, please help us broaden our reach - here's a message you can use to share with your whānau and friends:

Kia ora, have you read the Te Kahu o Taonui weekly digest? It's an all inclusive Taitokerau-wide E-Pānui newsletter, only takes a few minutes to read and it's the best way to stay connected with what is happening across our community. [Sign up here, it's free](#)



Share



Tweet



Forward



Share

[Subscribe](#)[Past Issues](#)[Translate ▼](#)

IWI WEBSITES

[Ngāti Kuri](#)[Te Aupouri](#)[NgaiTakoto](#)[Te Rarawa](#)[Te Rūnanga-Ā-Iwi O Ngāti Kahu](#)[Te Rūnanga o Ngāti Hine](#)[Kahukuraariki Trust](#)[Te Rūnanga o Whaingaroa](#)[Te Rūnanga-Ā-Iwi O Ngāpuhi](#)[Te Roroa](#)[Ngātiwai](#)[Ngāti Whātua](#)

Copyright © Te Kahu o Taonui, 2021. All rights reserved.

E-Pānui curated by M.E.A Limited.

All information in this digest is subject to privacy and we urge respectful use.

Want to change how you receive these emails?

You can [update your preferences](#) or [unsubscribe from this list](#).