



TE KAHU O TAONUI

Me mahi tahi tātou

To	Te Kahu o Taonui Chairs	Date	1 August 2022
CC	Te Kahu o Taonui Chief Executive Officers		
From	Te Rōpū Ringa Raupā Amorangi – Kiri Sloane-Hobson		

TE KAHU O TAONUI PŪRONGO

This pūrongo provides the Chairs with an update of movements within and relative to the Te Kahu o Taonui collective from January to June 2022. The period covers COVID-19, which has been heavily influential in terms of attending to the immediate priorities of whānau in a pandemic setting, programme of work, projects and operations.

2022 is the first year Matariki was recognised and celebrated as a national holiday. While this pūrongo briefs on the work undertaken by Te Kahu o Taonui, now, at the start of the Māori New Year is the opportunity to reflect, reset and raise our energy levels going forward.

Contained in this pūrongo is an overview of our governance matters of interest, pou and decision-making groups, operations and an outline of our projects (completed and in progress), financials and upcoming items to consider.

WHAKAPAPA

Ko Wai Mātou

Our Poropiti Aperehama Taonui was born 18th March 1810 and died 23rd September 1883. Before his death in 1883, Aperehama gave his last prediction:

He taniwha kei te haere mai, he taniwha tae kuhu tae huna e kore rawa koutou e kitea, e kore koutou e mohio kua tae mai, kia kitea rano i nga kanohi a o mokopuna.

Ina tae ki tena kua e patua i o Mokopuna, engari hipokingia o koutou mokopuna ki te kahu aroha a te whanau.

There is a demon on its way, it is a demon that will arrive stealthily and deviously and you will not see it coming and you will not even know that it's here until you see it in the eyes of your mokopuna. When you do, do not punish your mokopuna, you must wrap your mokopuna in the cloak of love of the Whānau.

Te Tiriti o Waitangi is the founding document of Aotearoa-New Zealand and the beginning of building a new nation. Signed in 1840 at Waitangi, Te Tiriti is the promise of a relationship between Māori and the Crown.

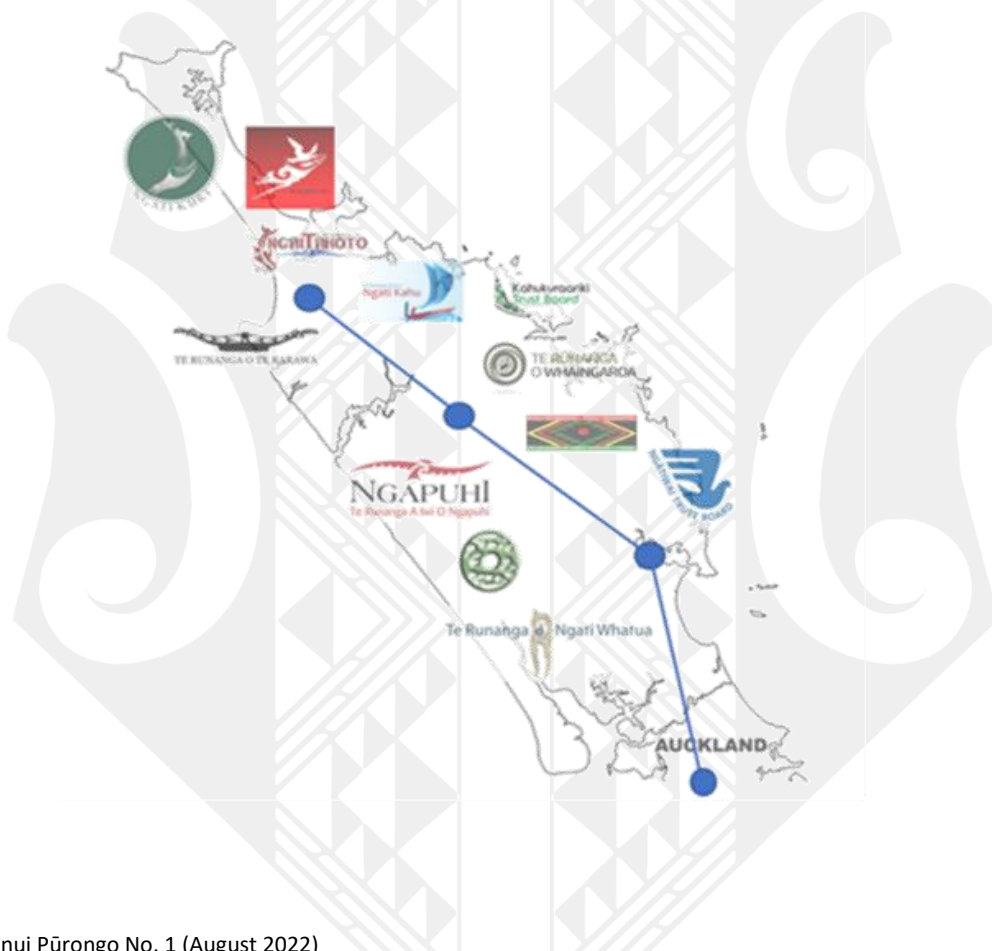
For Te Kahu O Taonui (Tai Tokerau Iwi Chairs Forum), Te Tiriti o Waitangi, together with He Whakaputanga o Te Rangatiratanga o Nu Tireni, provides the foundation of Māori-Crown relationships. As the Government represents the people, Te Tiriti is also a relationship for Māori with all New Zealanders.

In November 2014, the mana of Northland Māori was reinforced when the Waitangi Tribunal upheld that Northland Māori did not cede sovereignty. The Tribunal also recognised the articles of Te Tiriti o Waitangi as the basis for a mutually beneficial relationship between Māori and the Crown.

Te Tiriti o Waitangi and He Whakaputanga o Te Rangatiratanga o Nu Tireni are fundamental to our understanding of the United Nations Declaration of the Rights of Indigenous Peoples (2007).

Te Kahu O Taonui

Te Kahu O Taonui was established in 2006/7 and is now a collective of twelve Iwi in Te Taitokerau representing Ngāti Kuri, Te Aupōuri, Te Rarawa, Ngai Takoto, Ngāti Kahu, Kahukuraariki, Whaingaroa, Ngāpuhi, Ngāti Hine, Ngāti Wai, Te Roroa and Ngāti Whātua.



Our Purpose

- To advance the collective aspirations of Te Taitokerau Iwi
- To promote and support Māori aspirations for social and economic development in Te Taitokerau
- To provide a regional link to government priorities
- To ensure that Māori have a voice and actively participate
- Iwi to pool their collective mana and align in order to advance their interests while, at the same time, respect the mana of affiliated Iwi to make their own decisions and to opt in or out of matters as they see fit

Collective Iwi Objectives across Te Tai Tokerau

Our four collective Iwi Objectives are:

- Pou Tikanga
- Pou Tangata
- Pou Taiao
- Pou Tahua

KEY POINTS

1. Governance

Currently, there is a lot of movement at the Governance levels, which will have an effect on what we do on the ground. This also provides opportunities that will benefit our people.

Health reforms – Iwi Maori Partnership Boards (IMPB)

- Iwi Maori Partnership Boards (IMPBs) are a key partner in the system with HNZ and Te Aka Whai Ora, (Maori Health Authority) and will have a critical role in the process for setting locality plans for community whanau-centred (comprehensive primary) care to ensure the plans reflect local needs and priorities.
- While the individual boards and Te Aka Whai Ora will be separate entities, they will co-exist and be expected to form enduring partnerships to drive health equity for Māori across the system.
- IMPBs are involved at a strategic commissioning level in influencing priorities, outcomes, and allocation of the overall locality budget into priority areas – but are not expected to be involved in operational functions such as procuring specific individual provider contracts.

Three Waters Reform

- In July 2020, the Government launched the Three Waters Reform Programme – a three-year programme to reform local government three waters service delivery arrangements.
- As part of these reforms, the Government is proposing to establish four publicly-owned entities to take responsibility for drinking water, wastewater and stormwater infrastructure across Aotearoa. The Government considers such entities will create an affordable system that ensures delivery of safe drinking water as well as resilient wastewater and stormwater systems
- The proposed Three Waters reform will shift the current 67 council-owned and operated Three Waters services into four new publicly owned entities to manage the future delivery of these services – Entities A, B, C and D.

RoVE (Reform of Vocational Education)

- The Reform of Vocational Education (RoVE) represents a generational change in how vocational training is delivered in New Zealand, designed to create a stronger, more unified, and sustainable vocational education system. The transition to the new system is not expected to be completed until December 2022.
- Te Pūkenga is looking to engage with Iwi next month (August 2022) on the changes to the Polytechnic sector as a result of the reforms including the integration of all polytechnics including NorthTec into one national provision.
- The tenor of the engagement to be led by the NorthTec CEO (Toa Faneva) and Chairperson (Ripeka Evans) on how regional representation for the notional Te Tai Tokerau region of Te Pukenga (covering Tamaki to Te Rerenga Wairua) will deliver on Hapū-Iwi Mātauranga/higher education plans and aspirations being met through the vocational education system.
- Next steps on the engagement process will come through via myself and direct to Iwi in the coming weeks.

Whai Kainga - housing

- Housing is a priority for Te Kahu o Taonui; we will provide technical support to a range of programmes and approaches to support housing needs for Iwi, hapū and whānau
- Interim Operations support and investment into Te Pouahi o Te Taitokerau

District Judges

- District Court Chief Judge Heemi Taumanu (justice system), is bringing together Parliament, Corrections, Police, Justice and Iwi to review the current legal framework and system that does not serve Māori. This will bring the Te Ao Māori worldview into the framework and system

Renewable Energy Zones

- In late March 2022, Northpower and Top Energy hosted an Iwi Leaders' hui about Renewable Energy Zones (REZ). Te Kahu o Taonui wrote a submission to Transpower in support of staging a pilot REZ in Northland. It is highly likely Northland will be the chosen pilot site. Upgrading the lines could enable up to 2,000 MW of renewable energy to be exported to Auckland and reduce the electricity price for consumers. Installations are happening already with Te Roroa developing a wind farm and a solar farm installed by Tū Mai Rā Energy at Tau Henare Marae in Pipiwai.

Local Government Elections

- The upcoming local authority elections are also an area of interest. Māori under-representation on local councils has been longstanding, but there are talented Māori who have put their hands up to stand throughout Taitokerau. We need to encourage our people to participate and vote. This is especially important considering the various reforms that are taking place. Māori Wards, for example, have been hard fought for and we need to ensure that they remain and are successful.

2. Te Kahu o Taonui Decision Making Group

This is an overview of the decision-making groups that Te Kahu o Taonui are a part of and align to our four pou:

- Pou Tikanga
- Pou Tangata
- Pou Taiao
- Pou Tahua



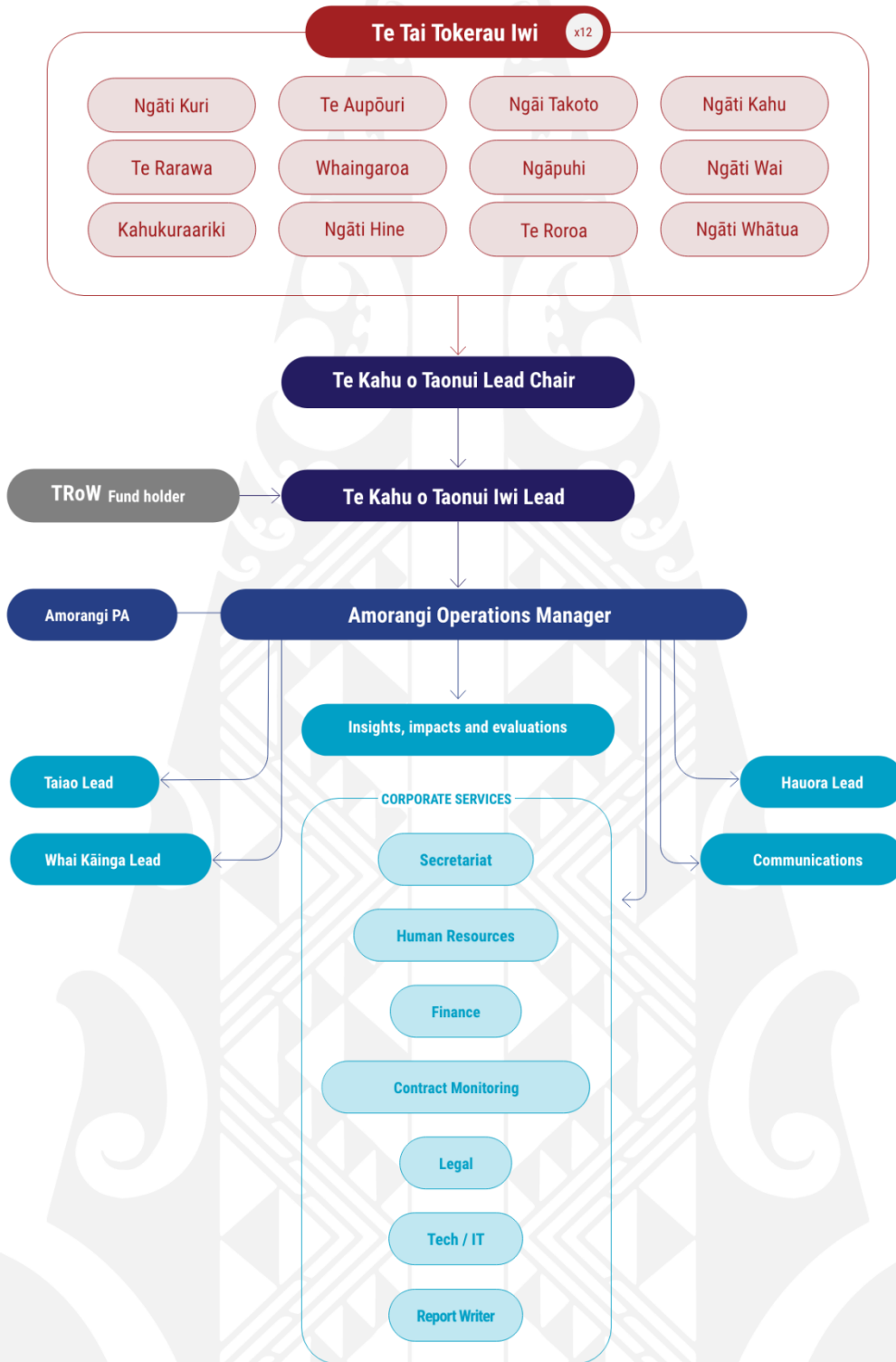
Pou	GROUP	PURPOSE OF GROUP
Pou Tangata	Kōtuiti Hauora	Treaty-based partnership between DHBs and Iwi. Formed during COVID-19 for implementation of Iwi-based response.
	Northland Civil Defence Emergency Management	Strategic direction for Civil Defence emergency management in Northland.
Pou Taiao Pou Tangata	Kaimahi - Jobs For Nature	Partnership approach programme to help revitalise communities through nature-based jobs to help stimulate the economy post-COVID-19. Over \$20 million has been invested in this programme of work.
Pou Tikanga	ILGACE	Iwi and Local Government Chief Executives Forum. Next hui the 23rd of August .
Pou Taiao	Three Waters Reform	Three-year programme to reform local government three waters service delivery arrangements.
Pou Tangata	Whai Kainga	Te Taitokerau All of Government Agencies push for housing, Te Kahu o Taonui are involved as Te Tiriti partner.
Pou Tangata	Social Welfare Governance Group	Provide leadership and oversight to inter- government agency responses and agreed strategies that impact on the social and economic wellbeing of Northland communities for beneficial change.
Pou Tahua	Regional Skills Leadership Group	Originally for providing insight into the impact of COVID-19, and the Government response. From July 2021 identifying and supporting better ways of meeting future skills and workforce needs.
Pou Tahua	Northland Intersectoral Forum	Inter-agency leadership group
Pou Tangata	Workforce Development Councils (WDC)	Provide industry with greater information across vocational education and training. There will be six WDC's developed.
Pou Tangata	Oranga Tamariki	Leading Aotearoa efforts to protect children and young people.
Pou Tangata	Kāinga Ora	Collaborative approach to delivering the Government's priorities for housing and urban development in New Zealand. These priorities include addressing homelessness and making homes more affordable for New Zealanders.
Pou Tangata	Department of Corrections	Public service department of New Zealand charged with managing the New Zealand corrections system.
Pou Tahua	Ngawha Innovation & Enterprise Park	Ngawha Innovation & Enterprise Park is a green field's development business park that protects the special characteristics of the site; co-locates business, education and training, research and development and business incubation and support; provides opportunities for local Māori landowners and businesses to invest in value-added activity.
Pou Tahua	Northland Economic Recovery	Rep required here
Pou Tangata Pou Tikanga	Tai Tokerau Border Control	
Pou Taiao Pou Ahuarangi	Climate Change Committee	

3. Operations Update

Our operations arm has been reviewed and reshaped to reflect our current realities, needs and priorities as we move out of endemic response to pivot forward to recovery and resilience.

- Act as the connector across the iwi Chairs/ CEs, coordinating the required hui
- Act as the centralised contact for all inwards and outwards correspondence to Te Kahu o Taonui Chairs and CEs with Crown relationships (central and local), and key stakeholders
- Operate as the connector between the individual Iwi to understand capabilities and where Te Kahu Taonui can provide support
- Develop and ensure robust policies, procedures and processes are in place and being utilised for all activities
- Provide financial oversight of all Te Kahu o Taonui activities
- Shaping, positioning and approving the contract requirements
- Assess progress against contract obligations
- Oversee all 'Response' programme logistics for Te Kahu o Taonui
- Plan with Iwi the requirements/ activities for the 'Recovery' and 'Resilience' phase
- Deliver all preparatory activities to ensure that the 'Recovery and Resilience' phase is set up and ready to effectively operate when required
- Build out the Te Kahu o Taonui proposition and ensure that this is well communicated to ensure a broader understanding
- Build the Operations performance matrix to ensure all activities are aligned, measurable and this clarity keeps all involved 'safe'

TE KAHU O TAONUI STRUCTURE



4. Te Kahu o Taonui Office

Toa Faneva – Chief Executive of Te Pūkenga NorthTec Te Taitokerau, with the support of Ripeka Evans (Chair of Te Pūkenga NorthTec) – was instrumental in the drive to secure Te Kahu o Taonui Te Rōpū Ringa Raupā Operations Team its own physical space. Te Kahu o Taonui has always operated virtually. A new whare gives the team our own place to wananga, work together, design, develop and implement.

5. The COVID-19 Response

The COVID-19 Response has been central to the work of Te Kahu o Taonui since the pandemic reached our shores in 2020. From the outset, we have supported and delivered services to whānau impacted by COVID-19.

Below is a table of contracts and projects undertaken in the last six months:

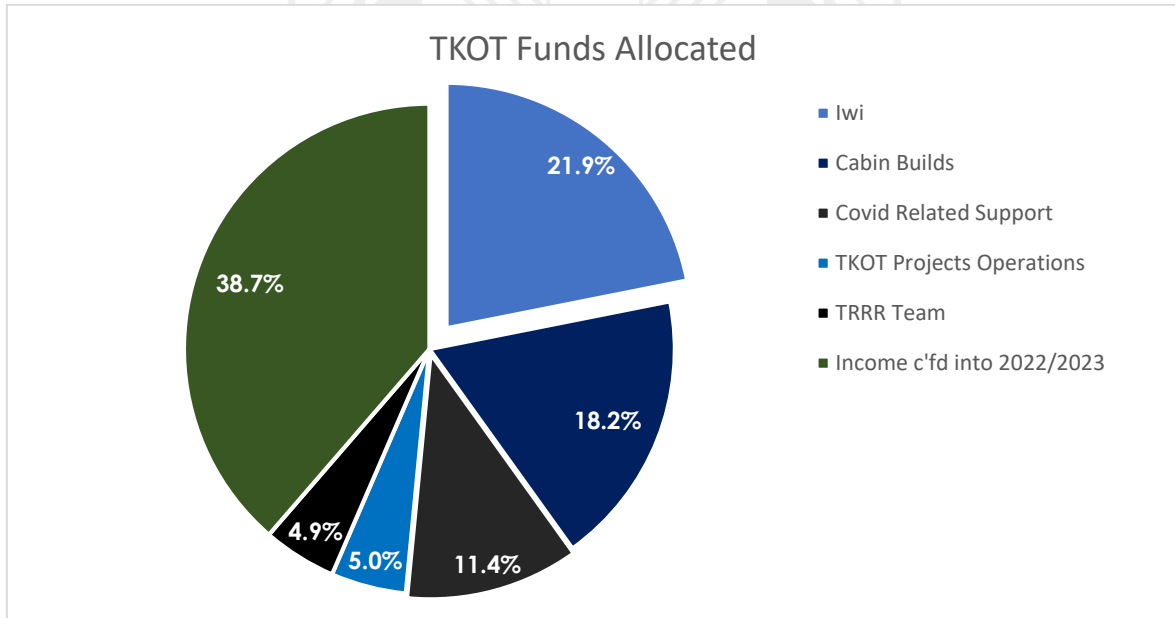
DATE	AGENCY	CONTRACT
1 Aug 2021 – 27 Feb 2022	MINISTRY OF HEALTH (MOH)	COVID-19 Vaccination & Immunisation Māori Comms Fund
1 Nov 2021 – 30 June 2022	MINISTRY OF SOCIAL DEVELOPMENT	Provider Capability Resilience Fund (Ops build)
11 Nov 2021 – 11 Feb 2022	Te Puni Kokiri	Māori vaccination
21 Jan – 30 June 2022	ORANGA TAMARIKI	COVID-19 Response
25 Feb – 30 June 2022	TE PUNI KŌKIRI	Phase 2: Māori Communities COVID-19 Fund
April – 30 June 2022	TE PUNI KŌKIRI	Whānau-Centred Approaches to Address Family Violence
Oct 2021 – 17 June 2022	TE ARAWHITI, OFFICE FOR CROWN:MAORI RELATIONS / MINISTRY OF JUSTICE	COVID-19 Response
Feb 2022 March 2022 April 2022	MINISTRY OF HEALTH	Omicron

6. Financials

The graph and financials provided here are based on the **full year 1 July 2021 to 30 June 2022** and not the six-month period from January to June 2022 that this pūrongo covers.

TE KAHU O TAONUUI	
Profit and Loss	
YEAR ENDING 30 JUNE 2022	
TKOT Funding Received	
MSD	1,538,862
MOH/DHB	1,290,000
HUDMOB	80,095
OT	190,000
Te Arawhiti	100,000
TPK	3,189,374
Other Income	1,829
	\$6,390,160
TKOT Funds Allocated	
Payments to Iwi	1,398,108
Cabin Builds	1,164,000
Covid Related Support	731,188
TKOT Project Operations	316,969
Operations – Te Rōpu Ringa Raupa	309,979
Income c'fd into 2022/2023	2,469,915
	\$6,390,160

TE KAHU O TAONUUI	
Financial Position	
AS AT 30 JUNE 2022	
Assets	
Bank	
Bank Account	2,869,623
Computer Equipment	17,659
GST	158,134
Total Assets	\$3,045,415
Liabilities	
Current Liabilities	
Accounts Payable	503,000
Accrued Expenses - General	72,500
Income in Advance	2,469,915
Total Current Liabilities	\$3,045,415
Net Assets	0
Equity	
Current Year Earnings	0
Total Equity	0



7. Future Focus

We are interested in developing a Future Focus document that sets out clear strategic plans and development. This aligns with the need to reflect, reset and raise our energy levels going forward.

We suggest an annual strategic planning and development hui where we can front-foot and set our priorities and areas of focus for the year.

- Future Focus: Strategic Planning and Development Hui **30th August 2022 (TBC)**
- A calendar of hui, and events is been designed and developed
- **Below are the dates for the National Iwi Chairs Forum**

