

# Kahukuraariki Trust Strategic Intent; Priorities; & Plan



# Background

---

## AGM 2019

- Aquaculture; Forestry; Housing; Milford Asset Management portfolio; Education; Employment opportunities; Olive growing; and Maori Carbon foundation (ETS carbon credits).

## AGM 2020

- Housing; Employment; Forestry – mix of pine and regenerative indigenous; Apiculture – beehives; Medicinal Cannabis; Aquaculture – Native Rock Oyster.

## AGM 2021

- No hui held – Covid/shutdowns and road closures

## AGM 2022

- Record KK for NKKW historical korero/establish whakapapa committee/kk roopu; Aquaculture; Housing; Kaitiakitanga – protect sites of cultural significance/taiao; Foster better relationships – internal/external; MIL portfolio; undertake land use options/assessment





## Our Journey

The Trust Board held 2 independently facilitated Strategic Planning workshops in 2022 (May & Sept). and a focus group hui in 2023 (June).

### 22 May 2022

- *Vision; Purpose; & Values*
- *Strategic Intent*
- *Our 5 Strategic Priorities*

### 17 Sept 2022

- *The 25 Year Vision*
- *Rautaki – the 5 Year Strategy (2023-28)*

### 12 June 2023

- *Our Pou (3)*
- *Strategic Goals (for each of the Pou)*
  - *KPI's (each Strategic Goal)*
- *Strategic Priorities (2023-25)*
- *Annual Plan 2023/24*
  - *Budget*
- *The Trust – Now and in the future (Structure)*

## Vision

*“Whiria te whakapapa, whiria to moemoea.”*

To contribute positively to the cultural, environmental, economic, and social well-being of the people, the land and the waters, of Ngātikahu ki Whangaroa.

## Purpose

*“Ma te karakia, te korero tahi me te mahi tahi, ka puawai to tatou whanaungatanga.”*

We will mahi tahi to:

- Strengthen our relationships with nga uri o Te Ao Māori, and
- Consolidate and grow our tribal platform, to
- ensure a prosperous future inter-generationally

## Values

**Manākitanga** - creating culture that values and supports our people

**Whanaungatanga** - strong relationships with each other and a sense of belonging, purpose and direction

**Kaitiakitanga** – good stewardship of our assets

**Tika, Pono me te Aroha.**

## Our Strategic Areas of Focus:

1. **Kia Kahu Te Tangata**  
*Our People*
2. **Kia Kahu Te Reo Me Ngā Tikanga**  
*Our Language & Culture*
3. **Kia Kahu Te Matauranga**  
*Our Knowledge, Inherent and Acquired*
4. **Kia Kahu Te Whenua, Te Wai Māori, Me Te Moana**  
*Our Land & Waters*
5. **Kia Kahu Ngā Rawa**  
*Our Economic Prosperity, Growth & Development*

## **Rautaki – The Strategy**

**This strategy covers the development phase of the Trust (first 5 years), and is built on feedback from whanau, hapū, Iwi at AGM, Review hui, and Trustees strategic planning sessions. It will remain in draft until the Trust has gone out and sought feedback and input from whanau, hapū and Iwi members in the latter half of 2023. It is designed to assist Ngātikahu ki Whangaroa grow culturally, socially and economically as individuals, whānau, hapu and Iwi.**

**Based on previous work, the Trust has also considered an aspirational plan of how Ngātikahu ki Whangaroa might look in 25 years' time. This includes building and maintaining those communities we live in to become thriving hubs that are self-sustaining with many opportunities; a place where whanau, hapū, Iwi members would want to return to live, work and enjoy the benefits and results of this strategy**

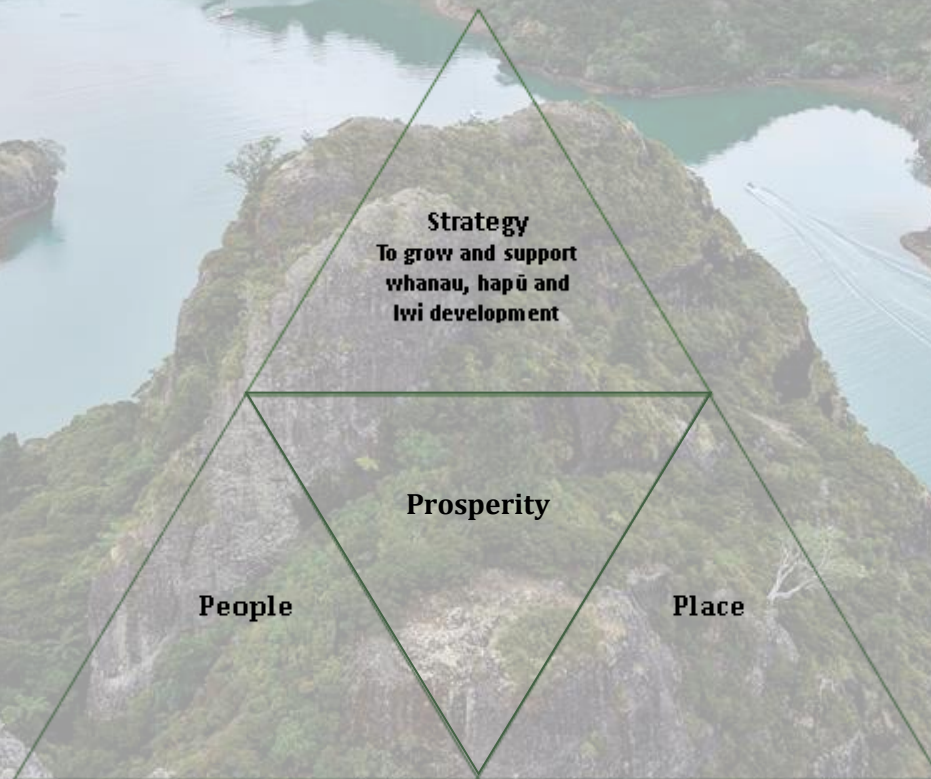
# The 25 Year Vision

The following five key focus areas will be used as a high level road map to determine priorities and intentional effort for the ensuing first tranche of the Strategic planning process – with an initial five year timeframe.

1. Iwi health and wellbeing is improved
2. Realise the educational aspirations of all whanau recognising that learning is life long
3. Protect, promote and rebuild Ngātikahu ki Whangaroa physical estates and assets
4. Opportunities for the prosperity of whanau and hapū members and the Iwi collectively are realised
5. Meaningful relationships maintained with stakeholders

## Rautaki - Five year Strategy

The strategy covers the five-year development phase (from 2023-2028) and is built on 3 “Pou” which focus on 5 priority areas with measurable Key Performance Indicators (KPI’s):





# Pou 1 – People

## 5 Year Strategic Goal

- **Ngati Kahu ki Whangaroatanga** *improve the wellbeing of whanau, hapū and Iwi members*
- **Community Services Available**
- **Reo language Revitalisation**
- **Create Cultural Connection Opportunities**
- **Improved Communications**
- **Warm Affordable Housing**
- **Organisational Growth & Development**
- **Other?**

# Pou 2 – Place

## 5 Year Strategic Goal

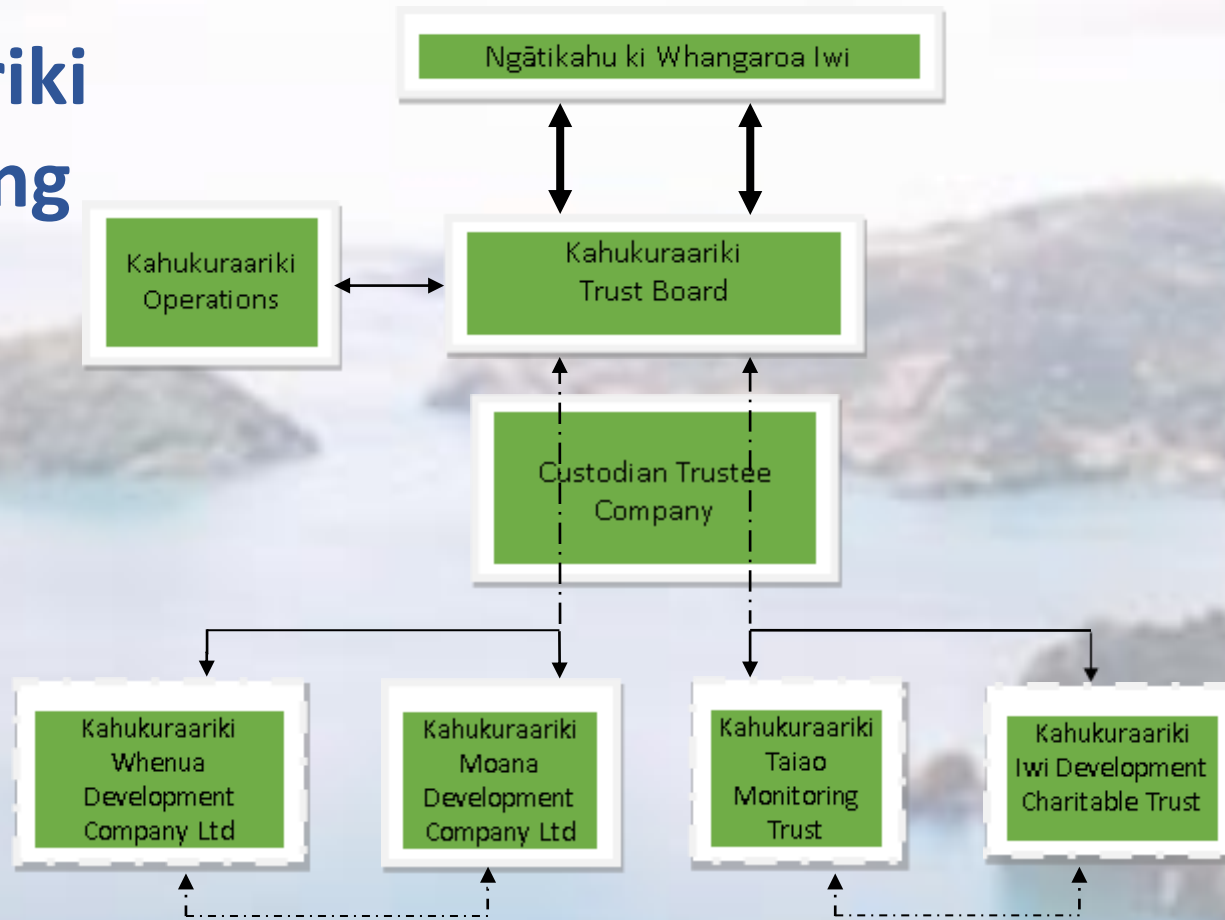
- **Conservation** *Increase our influence*
- **Iwi Taonga** *(DoS)*
- **Resource Management**
- **Other?**

# Pou 3 – Prosperity

## 5 Year Strategic Goal

- **Settlement Assets (Whenua) Returned**
- **Investment Portfolio *Milford Managed Investments***
- **Aquaculture *Native Rock Oyster Project***
- **Forestry**
- **Horticulture**
- **Apiculture**
- **Other.....**

# Kahukuraariki Future Facing Framework



The Financial engine of the Trust, working closely to provide an economic platform for the whanau, hapū and Iwi

ASSET CLASSES:

- Farming
- Forestry
- Horticulture
- Apiculture
- Aquaculture
- Fisheries
- Housing
- Freshwater capture
- Solar Power

The Environmental & Tangata Guardians of the Trust, working closely to provide a balance between harnessing, utilizing and enhancing natural resources; and providing the link to government, philanthropic, housing, social, health networks and resources for the whanau hapū and Iwi

# Strategic Intent 2023-28

## Te Pae Tawhiti = Vision

- To positively contribute to the cultural, economic, environmental, and social well-being of the people, the land and the waters of Ngātīkahu ki Whangaroa.

## Te Kaupapa = Mission

We will mahi tahi to:

- strengthen our relationships with nga uri o Te Ao Maori.
- Consolidate and grow our economic platform,
- ensure a prosperous future inter-generationally

**Kia kahu te reo me nga tikanga**  
Our language & culture

### Desired Outcomes

- Reo Language Revitalisation
- Ngātīkahu ki Whangaroatanga celebrated
- Incorporate tikanga into how we do things

**Kia kahu te matauranga**  
Our knowledge inherent & acquired

### Desired Outcomes

- Incorporate Matauranga into what we do
- All Iwi Taonga protected

**Kia kahu te tangata**  
Our people

### Desired Outcomes

- Good internal-external Communications
- Advocacy – politically influential, astute and aware
- Warm Affordable Housing
- Well-being of members, whanau, hapu, Iwi

**Kia kahu te whenua, te wai maori, me te moana**  
Our land & waters

### Desired Outcomes

- Natural Resource Management of our Taiao and resources
- Investigate & incorporate Regenerative Agriculture & Horticulture practices

**Kia kahu nga rawa**


Our economic prosperity, growth, and development

### Desired Outcomes

- Waikōhatu Station is thriving
- Investment Portfolio has steady growth
- Managed Organisational Development & Growth
- Invest in Aquaculture/Fisheries Development

## Nga Tikanga = Values

Manaakitanga  
Whanaungatanga  
Kaitiakitanga  
Tika, Pono me te Aroha

A scenic sunset over a coastal landscape. The sky transitions from a deep blue at the top to a vibrant orange and red near the horizon. The ocean is visible in the middle ground, with several dark, rocky islands or headlands scattered across it. In the foreground, the silhouettes of trees and a dark, possibly paved area are visible against the bright light of the setting sun.

# Where are we at now? Where to from here?

- **Seek Feedback from NKKW Iwi/Hapu/Hapori/Whanau members through engagement hui.**
- **One hui held within the NKKW rohe – Waitaruke Marae, Saturday 5<sup>th</sup> August 2023, 9am onwards**
- **One hui held in Auckland – Sudima Conference facility, Mangere, Friday 25<sup>th</sup> August 2023, 5pm onwards**
- **Kaumatua/Kuia Dinner, to be held Taipa Resort, 29<sup>th</sup> September 2023, 5pm onwards**
- **AGM to be held at Otangaroa Marae, 30<sup>th</sup> Sept 2023**
- **Finalise Strategic Plan and post on website/social media sites**

# Some of the Feedback to date:

- Include more values – all the “tangas.”
- Nga Uri o Te Ao Maori – too wide – need to connect with each other first
- Inclusion of Kaumatua roopu
- We need to records more of our stories
- Social media – get our messages out to rangatahi
- Water is going to be an important Taonga in the future – build more dams
- Solar power – future – conservation – sustainable future
- State of housing is appalling – need better houses – healthy homes insulation - occupants must have jobs
- Carry out analysis of housing needs
- Maori population outstrips whenua maori available
- No pine forestry – plant indigenous forests
- Enviro-tourism
- Change ‘Kahukuraariki’ name to Ngatikahu ki Whangaroa instead
- Whangaroa needs drug & alcohol rehabilitation places – it’s everywhere!
- Collaborate with TRoW or Ngati Kahu – social & health service provision
- Where does Wairuatanga sit?
- Use “Nga Uri o Whangaroa” instead of Whangaroatanga
- Bring the passion back to our peoples understanding of who they are.
- Climate change – get Mike Smith to speak on Marae
- Coastal inundation – Urupa/Marae/Kainga under threat
- Add agriculture regenerative/dry stock/dairy
- Add property development – commercial
- Fisheries assets – Get KTB share back from TRoW
- Education should be across all Pou
- Native plant nurseries